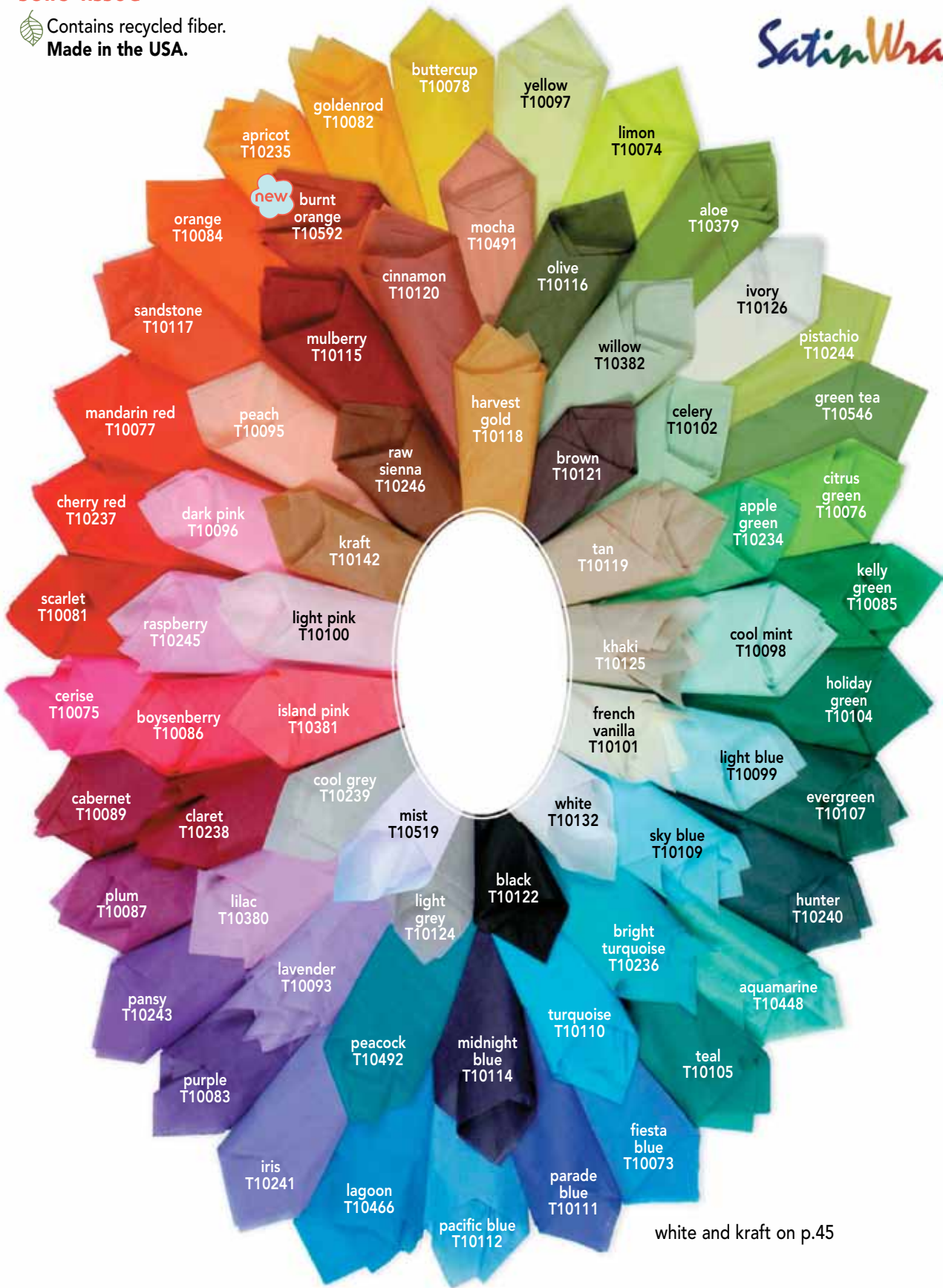


solid tissue

Contains recycled fiber.
Made in the USA.




white and kraft on p.45

satinwrap® tissue colors

item#	sheet size	sheets/pack	wt./pack	1-9 packs	10-24 packs	25+ packs
see photo	20" x 30" - quire	480	7#	\$34.62	\$31.95	\$29.67

solid, white and kraft tissue

 Contains recycled fiber.
Made in the USA.



medley packs



popular pack

satinwrap® medley packs

sheet size	item#	description	sheets/pack	wt./pack	1-9 packs	10-24 packs	25+ packs
20" x 30" - quire	T10293	popular pack	480	7#	\$47.06	\$43.44	\$40.34
20" x 30" - quire	T10493	medley brights	480	7#	\$28.53	\$26.33	\$24.45
20" x 30" - quire	T10494	medley lights	480	7#	\$28.53	\$26.33	\$24.45
20" x 30" - quire	T10478	medley mix	480	7#	\$28.53	\$26.33	\$24.45

**10 lb. #1 white satinwrap® tissue-sheets
 (87 brightness, neutral ph-acid free)**

sheet size	item#	sheets/pack	wt./pack	1-9 packs	10-24 packs	25+ packs
15" x 20" - flat	T10127	960	7#	\$18.58	\$17.15	\$15.92
18" x 24" - flat	T10128	960	10#	\$27.95	\$25.80	\$23.96
18" x 27" - flat	T10129	960	12#	\$32.16	\$29.68	\$27.56
20" x 30" - flat	T10130	960	14#	\$34.38	\$31.74	\$29.47
20" x 30" - quire	T10132	480	7#	\$19.88	\$18.35	\$17.04
24" x 36" - flat	T10131	960	20#	\$57.09	\$52.70	\$48.93

**10 lb. economy white tissue-sheets
 (80 brightness)**

sheet size	item#	sheets/pack	wt./pack	1-9 packs	10-24 packs	25+ packs
15" x 20" - flat	T10133	960	7#	\$17.00	\$15.69	\$14.57
18" x 24" - flat	T10134	960	10#	\$24.34	\$22.47	\$20.87
20" x 30" - flat	T10135	960	14#	\$31.98	\$29.52	\$27.41
24" x 36" - flat	T10136	960	20#	\$49.23	\$45.44	\$42.19

**10 lb. #1 white satinwrap® tissue-counter rolls
 (87 brightness, neutral ph-acid free)**

sheet size	item#	rolls/carton	wt./roll	1-9 rolls	10-24 rolls	25+ rolls
18" wide x 9" O.D.	T10137	1	25#	\$76.42	\$70.54	\$65.51
20" wide x 9" O.D.	T10138	1	27#	\$87.59	\$80.85	\$75.08
24" wide x 9" O.D.	T10139	1	33#	\$107.91	\$99.61	\$92.49

All rolls wound on 3" core with 7/8" I.D. Plug. Approximately 5200 linear feet per roll.

**10 lb. recycled kraft tissue-sheets
 (neutral ph-acid free)**

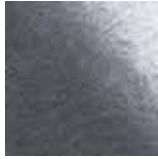
sheet size	item#	sheets/pack	wt./pack	1-9 packs	10-24 packs	25+ packs
15" x 20" - flat	T10140	960	7#	\$18.58	\$17.15	\$15.92
20" x 30" - flat	T10141	960	14#	\$35.76	\$33.01	\$30.65
20" x 30" - quire	T10142	480	7#	\$17.89	\$16.51	\$15.33

pearlscence® printed tissue

20" x 30" sheets • 4 packs/case • * 200 sheets/pack • (E), (F) or (G) indicates price level



T10226 (F)
Antique Gold
2-sided



T10227 (F)
Antique Silver
2-sided



T10600 (E)
Green Tea



T10222 (E)
Black Brass



T10216 (E)
Bright Turquoise



T10229 (G)
Bronze
2-sided



T10224 (F)
Champagne
2-sided



T10230 (G)
Copper
2-sided



T10221 (E)
Holiday Green



T10217 (E)
Lavender



T10228 (F)
Pewter
2-sided



T10218 (E)
Purple



T10219 (E)
Scarlet




T10225 (F)
Sun Gold
2-sided



T10223 (E)
White



T10383 (E)
Cerise

 Contains recycled fiber.
Made in the USA.

printed tissue

sheet size	item#	price category	wt./pack	1-9 packs	10-24 packs	25+ packs
20" x 30"	see photos	"A" level	5#	\$40.01	\$36.93	\$34.30
20" x 30"	see photos	"B" level	5#	\$47.43	\$43.78	\$40.66
20" x 30"	see photos	"D" level	4#	\$44.04	\$40.66	\$37.75
20" x 30"	see photos	"E" level	4#	\$57.92	\$53.47	\$49.65
20" x 30"	see photos	"F" level	4#	\$66.60	\$61.48	\$57.08
20" x 30"	see photos	"G" level	4#	\$86.51	\$79.86	\$74.15

"A" & "B" level designs packed either 200 or 240 sheets per pack, soft folded

"D" level designs packed 100 sheets per pack, soft folded

"E", "F", & "G" level designs packed 200 sheets per pack, soft folded

non-woven tissue



item#	color
1. T11021	Sage
2. T11010	Cerise
3. T11015	Yellow
4. T11012	Black

item#	color
5. T11017	Turquoise
6. T11002	Orange
7. T11004	Pansy
8. T11011	Pink

item#	color
9. T11001	Forest Green
10. T11008	Light Blue
11. T11014	Royal
12. T11019	White

item#	color
13. T11007	Red
14. T11016	Apple Green

non-woven tissue

description	item#	sheets/pack	wt./pack	1-9 packs	10-24 packs	25+ packs
20" x 30" - quire	see chart	250	5#	\$33.03	\$30.49	\$28.31

(Subject to availability.)